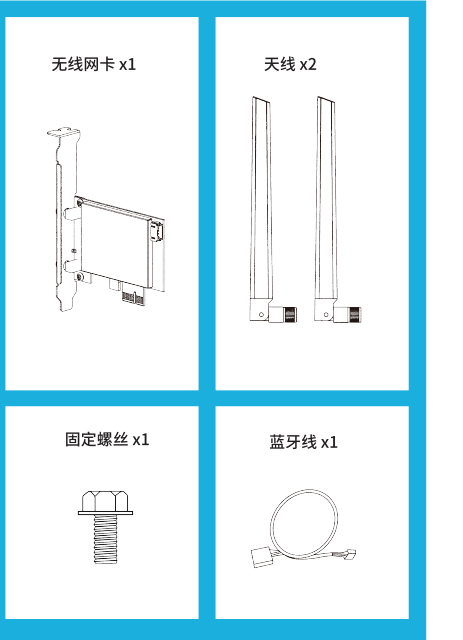




# 快速安装指南

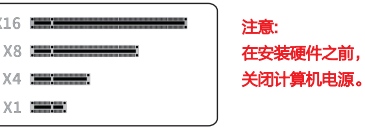
驱动安装  
M220322 版本2.1



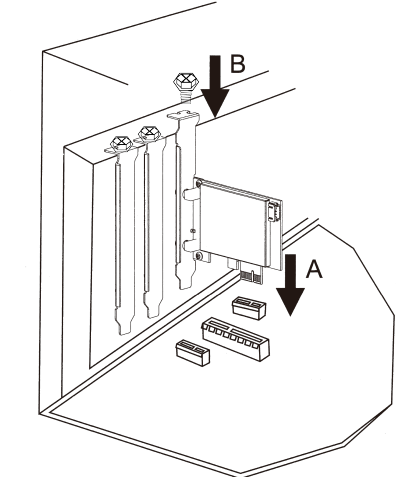
仅支持Win10/Win11 64位系统  
安装完成后重启电脑

## 1 硬件安装

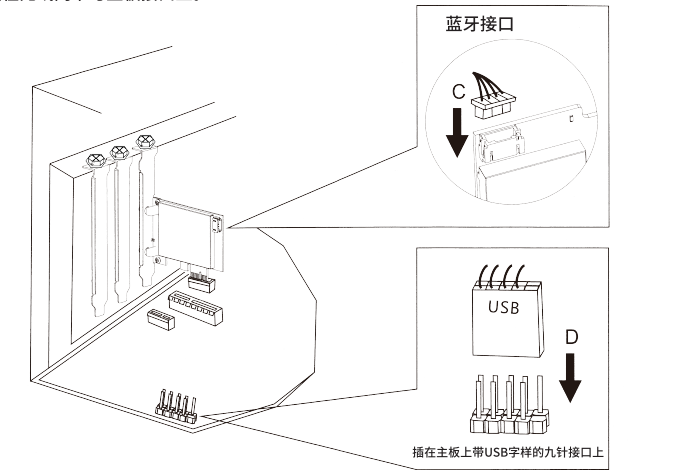
1.1 将网卡插入PCI-Ex1插槽(同时也兼容PCI-Ex4、PCI-Ex8、PCI-Ex16插槽),用螺丝固定挡板。



注意:  
在安装硬件之前,请先  
关闭计算机电源。



1.2 将蓝牙线分别插在无线网卡与主板接口上。



蓝牙接线

## 2 网卡WiFi驱动安装

2.1 此安装方法以win10系统为例,打开对应的驱动文件夹,双击“AXPCIE WIN WiFi setup.exe”运行安装程序,即可完成安装。  
(备注: 如果安装文件是压缩包需解压后才能安装)

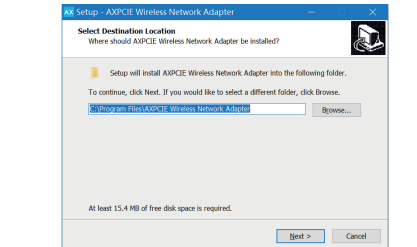


驱动下载:

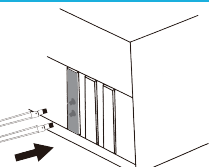
请在浏览器中输入驱动下载链接:  
<https://bit.ly/3itVmJl>  
或者扫描右边的二维码进行下载。



扫描下载



## 1.3 天线安装。



驱动未安装前:



WiFi驱动安装后:



蓝牙驱动安装后:



2.2 网卡连接WiFi使用:

01. 点击电脑右下角此图标, 或者 打开去搜索WiFi信号。



02. 选择自己需要连接的WiFi信号, 并输入密码进行连接。

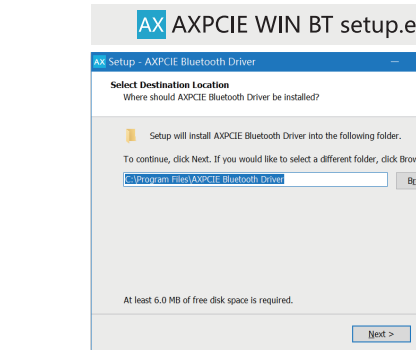


03. 当WiFi连接成功后的状态:

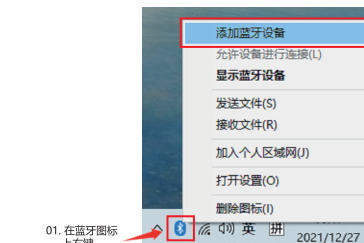


## 3 蓝牙驱动安装

3.1 将下载后的驱动解压出来, 找到“AXPCIE WIN BT setup.exe”并双击进行程序安装, 点击“Next”直到驱动安装完成即可。



3.2 蓝牙连接



02. 点击“添加蓝牙设备”

03. 点击“+”



04. 点击“蓝牙”进行设备搜索

05. 双击蓝牙设备进行配对连接。

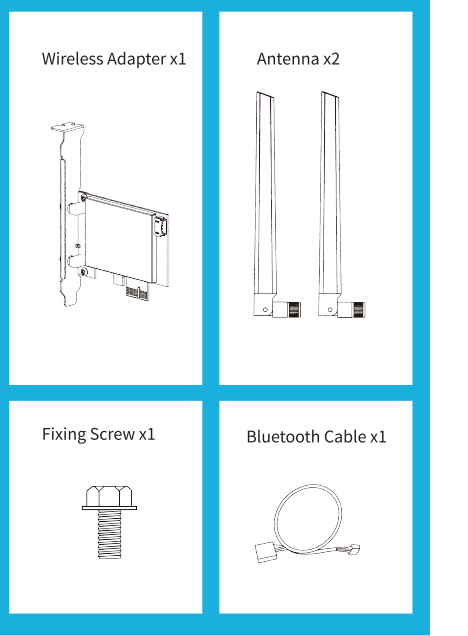


06. 点击“已完成”即可完成蓝牙设备连接。

# Quick Installation Guide

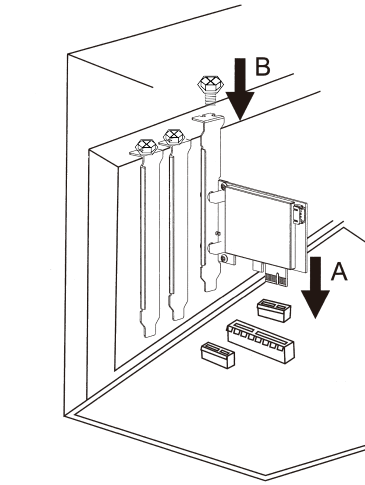
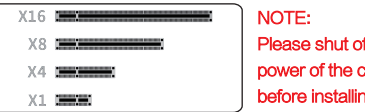
Driver Installation  
M220322 Version 2.1

Only supported for Windows 10 (64-bit) and Windows 11 (64-bit)  
After the installation is complete, restart the computer.

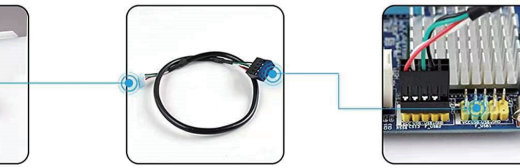
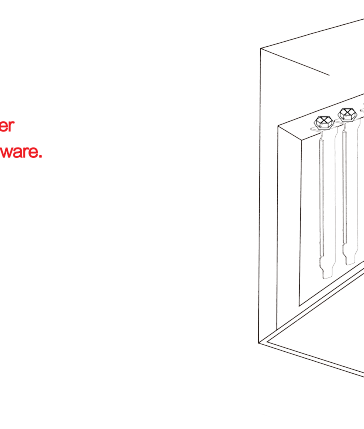


## 1 Hardware Installation

1.1 Insert the wireless adapter into the PCI-Ex1 slot(Also compatible with PCI-Ex4,PCI-Ex8,PCI-Ex16 slots) and screw the bezel.



1.2 Plug the Bluetooth cable into the wireless adapter and the motherboard interface.



Bluetooth Cable



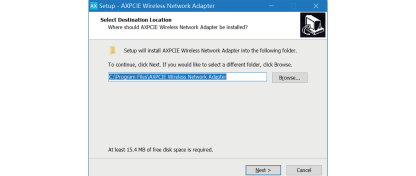
Bluetooth Cable

## 2 Wireless Adapter WiFi Driver Installation

2.1 This installation method uses win10 system as an example, open the corresponding driver folder, double-click "AXPCIE WIN WiFi setup.exe" to run the installation program, and the installation can be completed. (Note: if the installation file is a compressed package, you need to decompress it to install)



Driver Download:  
Please enter the driver download link in your browser:  
<https://bit.ly/3itVmJl>  
Or scan the QR code to download.



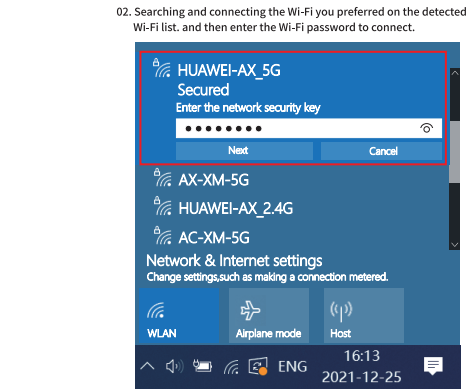
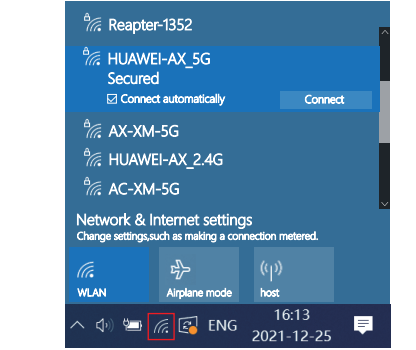
All Driver Before installation

WiFi driver After installation

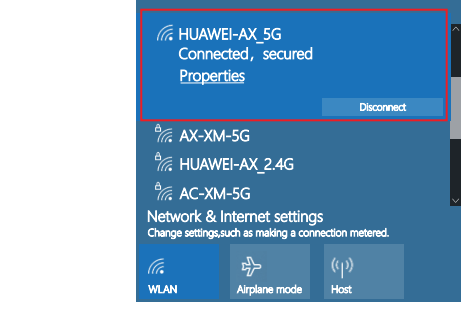
Bluetooth Driver After installation

2.2 How to connet the PCI-E card to Wi-Fi?

01. Open the Internet icon or at the lower right corner of the computer.

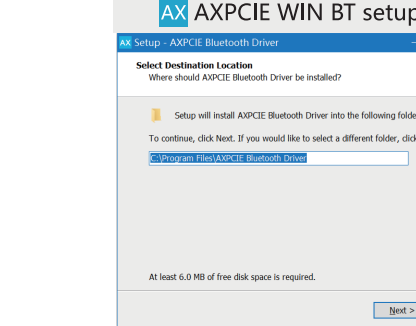


03. Finally you are connected to the Wi-Fi.



## 3 Bluetooth Driver Installation

3.1 Unzip the downloaded driver and double-click "AXPCIE WIN BT setup.exe", Click "Next" until the driver is installed.



3.2 How to connect the Bluetooth devices with the adapter?

